

Duration: ca 12 min.

Hodechtri

for Flute, Clarinet, Violin, Cello,
Piano, Percussion and Electronics **Peter Swinnen**

2006

1.1 Poco Lento, ma senza misura (♩=36) (*)

Perc

Violoncello

con Perc

(*) In the whole section until Allegro there should be no synchronisation between the 3 superposed musical layers, except for the different conductor's cues. Each layer however needs to be internally perfectly synchronised, as indicated in the many 'col' instructions. At each cue point the conductor should wait for the latest arriving layer, and cue the others immediately.

1.2

2.1

2.2

3.1

Fl

con Fl

3.2

3.3

4.1

4.2

5.1 Poco meno Lento, ma sempre senza misura (♩ = 39)

Pft

5.2 5.3 Perc
con Perc

5.4

1 Fl 2
con Fl

3 4 1

2 3 1

2 1

2 3

1 **Allegro** (♩=113)
ben ritmato

3

5

7

9

11

13

5+3+3/16 4+4+5+5/16 5+4+4/16 5+7+4/16

16

5+7+4/16 3+3+5/16 5+3+3+3+4/16 4+4+3+3+5/16

19

4+4+3+3+5/16 3+4+3+3+3/16 5/16 6+4+5/16

22

6+4+5/16 6+5+5+5/16 5+4+4/16

24

5+4+4/16 6+3+4+5/16 4+4+5/16 5+5/16

27

5+5/16 6/16 4+5+3+3+3/16 6/16

30

6/16 6+4/16 6/16 5+6/16 5+4/16

34

5+4/16 6/16 5+4/16 5+5/16

38

5+4/16 5+5/16 6/16 5+4/16

43

5+4/16 5+5/16 4+5/16 5+5/16

48

5+5/16 4+5/16 5+6/16 5+5/16 5+6/16

52

5+6/16 5+4/16 5+5+4/16 5+5/16

57

sul pont

62

66

70

74

79

84

88

93

ordinario

98

102

106

110

114

119

123

1 Senza Misura, ma sempre stesso Tempo (*) 2

129

Vn
Pft
8va
loco
col Vn e Pft

(*) From here till Sempre stesso Tempo there should be no synchronisation between the 2 superposed musical layers, except for the different conductor's cues. Each layer however needs to be internally perfectly synchronised, as indicated in the col' instructions. At 2 the conductor should wait for the latest arriving layer, and cue the others immediately.

132 Sempre stesso Tempo

132

sul pont

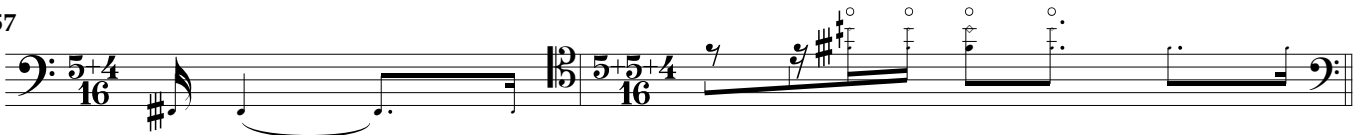
136

141

145

149

154



1 **Andante, ma senza misura** (♩=45) (*)

con sordino

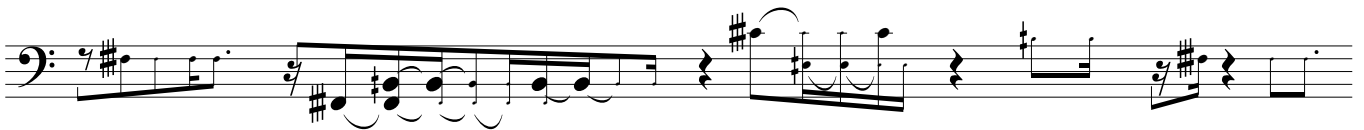
sul pont.



(*) From here till the end there should be no synchronisation between the 6 superposed musical layers, except for the different conductor's cues. At each cue the conductor should wait for the latest arriving layer, and cue the others immediately.



2



3



4

